

POLICY NUMBER: 6.30-20

SUBJECT: Policy for Watershed Survey, Watershed Protection Plan, and Implementation Project Grant Funding

EFFECTIVE DATE: 2/24/2020

SUPERCEDES: 6/07, 6/12

APPROVED BY: BOT

Purpose: The purpose of this policy is to define the District's position on contributions to Watershed Survey, Watershed Protection Plan, and Implementation projects.

Scope: This policy applies to all

Responsibility: The interpretation of this policy shall be the responsibility of the Director of AMaP and the General Manager

Definitions: None

Policy:

Background:

One of the largest threats to lake water quality is nutrient input to a lake from soil erosion. Nutrients can lead to unwanted algae growth and degradation of water quality. Identifying, assessing, and remediating erosion on the land that drains to a lake helps to protect water quality.

Section 319 of the Clean Water Act provides funding to states to correct erosion problems on water bodies. The Maine Department of Environmental Protection administers the grant program at the state level each year. The District has been awarded grants in the past to fix erosion problems around Sebago Lake and has partnered with other organizations to fix erosion problems on other lakes in the watershed.

There are three steps in the process of conducting this type of erosion control work:

- **Watershed Survey:**

The first step in the process, a Watershed Survey involves assessing and prioritizing erosion sites along roads and shorefront areas in the watershed of a waterbody. There is no grant funding for conducting a Watershed Survey.

- **Watershed Based Protection Plan (WBPP):**

The second step is a report that incorporates the Watershed Survey information and provides a locally supported plan to address nonpoint source pollution over time. The WBPP must be approved by Maine DEP and EPA and is a requirement for an organization to apply for 319 grant funding. There is no grant funding for developing a WBPP.

- **Implementation Project:**



The last step in the process is to implement fixes to erosion sites identified in the WBPP. The typical timeframe for an Implementation Project is two years. There may be multiple Implementation Projects done in phases over a number of years within a watershed. There is 319 grant funding available for Implementation Projects.

In 2015, District staff and partner organizations assessed the movement of nutrients in the Sebago Lake watershed. This 2015 assessment of the watershed has been used to guide the revision of the current policy. The watershed encompasses 450 square miles, which includes the direct and indirect portions of the watershed. The direct watershed is about 220 square miles in area and is the land area where runoff flows directly into Sebago Lake or a tributary that drains to the lake, such as the Crooked River. In the direct watershed, harmful nutrients can flow directly into Sebago Lake. The indirect watershed is about 230 square miles in area and is the land where runoff drains to another lake or lakes before reaching Sebago Lake. This means that some nutrients can potentially settle out of the water before it reaches Sebago Lake.

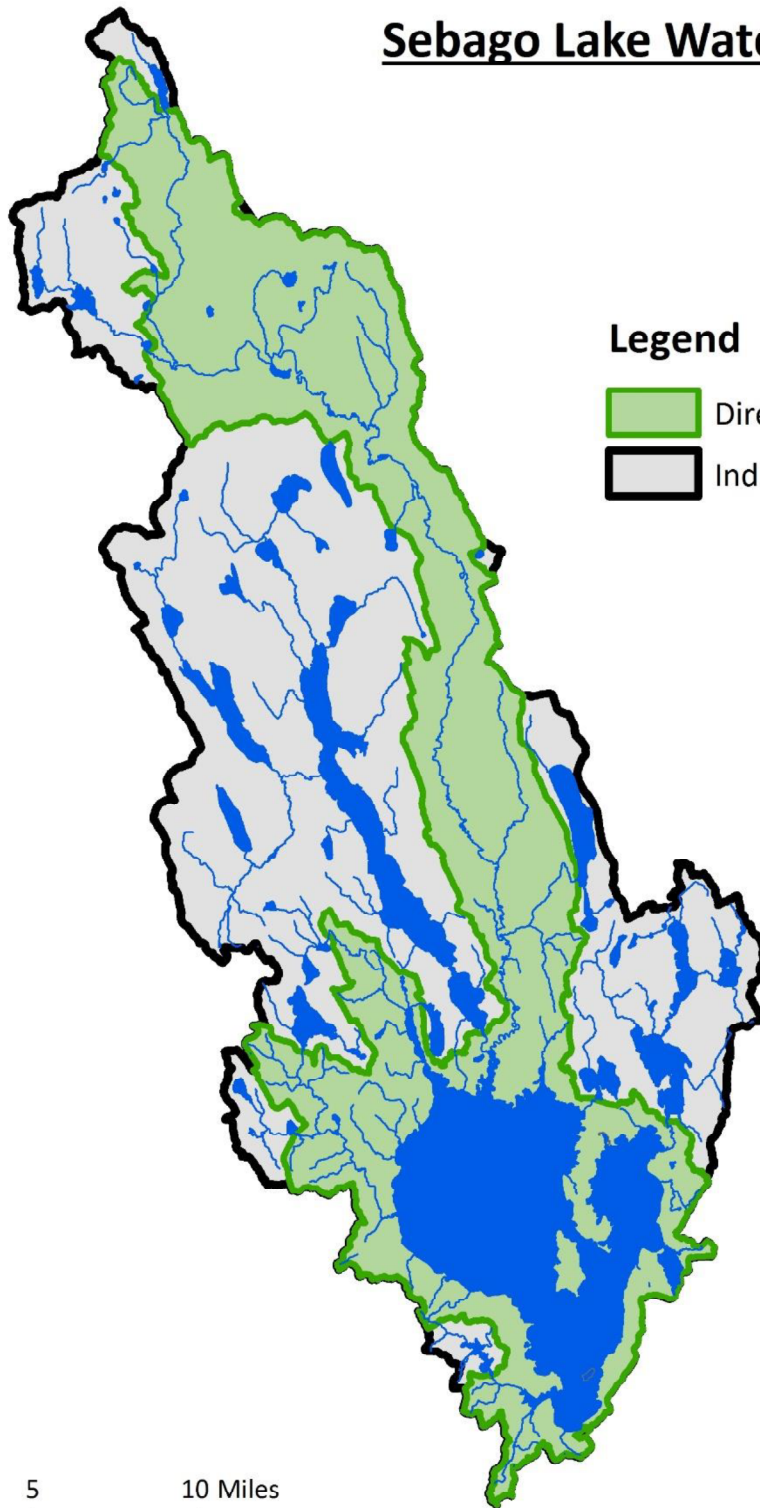
Because of the large cost and scope of Watershed Surveys, Watershed Based Protection Plans (WBPP), and Implementation Projects, it is vital that many organizations partner in order to accomplish the ultimate goal of water quality protection. By offering financial and technical support, the District helps to make these projects possible. Such projects benefit the customers of the Portland Water District, as they improve the quality of water ultimately flowing into Sebago Lake.

Sebago Lake Watershed

Legend

-  Direct Watershed
-  Indirect Watershed

0 2.5 5 10 Miles



Funding Policy: All contributions must be approved by the Board of Trustees.

District contributions to projects in the direct watershed of Sebago Lake:

	PWD share of each step
Step I: Watershed Survey	100% (PWD staff time)
Step II: Watershed Based Protection Plan	100% (PWD staff time)
Step III: Implementation Project	Up to 30% *

* District match is largely comprised of annually budgeted work that Source Protection staff completes as part of their routine lake protection work.

District contributions to projects in the indirect watershed of Sebago Lake:

	PWD share of each step
Step I: Watershed Survey	Up to 25%
Step II: Watershed Based Protection Plan	Up to 25%
Step III: Implementation Project	Up to 10%

Complaint Procedure: Any concerns about this policy should be directed to the Board of Trustees.